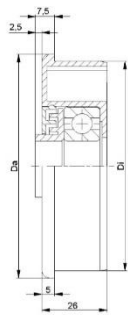
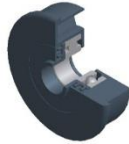


PRP -AX8 (Female Thread) Bolt-in rollers for Under Belt / Gravity – Plastic c/w steel bearings & axle



SEALED

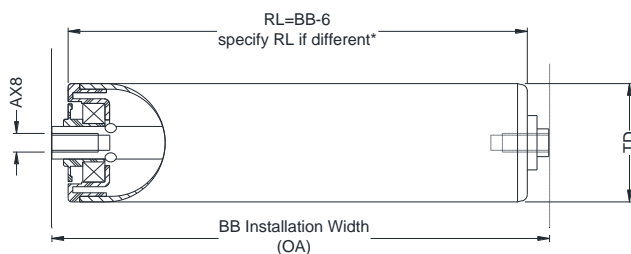


PRP series are general purpose plastic rollers with sealed plastic housed precision bearing (pop metric) for manual/under belt applications

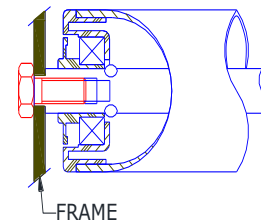
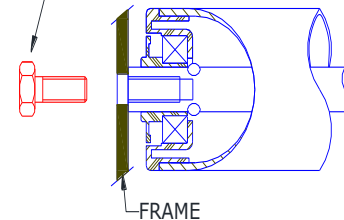
Found in >	MATERIAL	EXTRAS
Battery/Chemical	Rigid pvc FDA Blue RAL 5002	Rubber Sleeve*PRP50 ONLY
Under Belt	--	STAINLESS AXLES
Airport	GREY 48	
Warehouse	NOT FDA	

Roller Type	Roller Diameter & Colour	Female Thread available	Axle code Is followed by thread	Bearing Type +Housing	Load Capacity†
PRP40GAX8	∅40 – GREY	M5x10 (AX85) M6x12 (AX86)	AX85 / AX86	PR40-37 +6002	15kgF udl
PRP40AX8	∅40 – BLUE	M5x10 M6x12 M8x16	AX85 / AX86 /AX88	PR40-37 +6002	15kgF udl
PRP50GAX8	∅50 – GREY	M6x12, M8x16 M10x20	AX86 / AX88 / AX810	KTR-EBH50-45+6202	40kgF udl
PRP50AX8	∅50 – BLUE	M6x12, M8x16 M10x20	AX86 / AX88 / AX810	KTR-EBH50-45+6202	40kgF udl
PRP60AX8	∅60 – BLUE	M6x12, M8x16 M10x20	AX86 / AX88 / AX810	KTR-EBH60-54+6202	50kgF udl
PRP63AX8	∅63 – BLUE	M6x12, M8x16 M10x20	AX86 / AX88 / AX810	KTR-EBH60-56+6202	60kgF udl
PRP90HDAX8	∅90 – GREY	M8x16, M10x20 M12x26	AX88 / AX810 / AX812	KLH89-7-6204	100kgF udl

IMPORTANT: †Load Capacity calculated on standard lengths. Please ask to confirm advisable load on quotation/order



BOLT FIXING NOT INCLUDED



Roller Type (ie PRP50G)	
Installation Width (BB)	
Female Thread size	
Quantity Required	
RL (Roller Length*)	
OA (over all axle length*)	
*leave blank if rollers are to suit installation width (BB)	

Company Name and address:-

Signed.....Print.....

Date: Purchase order No.....

Collect or Send by Carrier – circle as appropriate

Comments:

Please sign & return Order